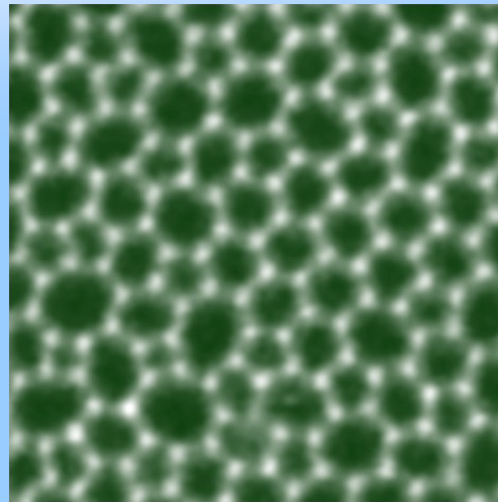
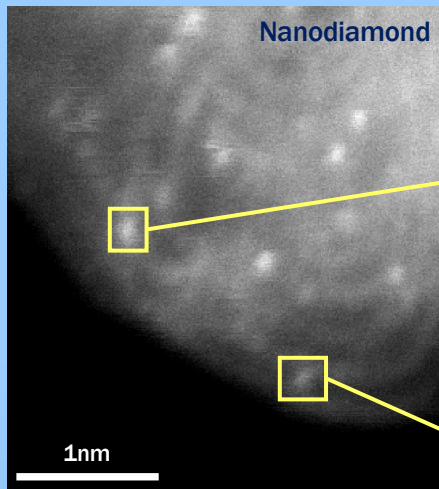
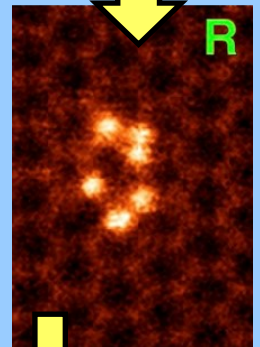
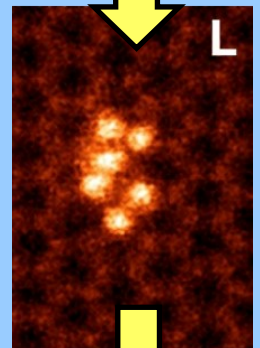
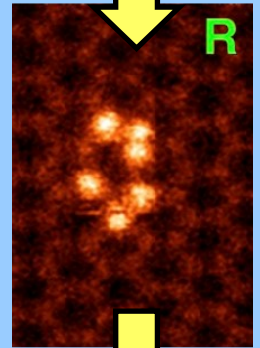
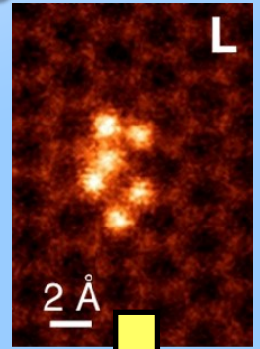


1k×1k EEL chemical map of LaMnO₃/SrMnO₃ superlattice.
 Monkman et al., *Nature Mater.* **11** (2012) 855-859

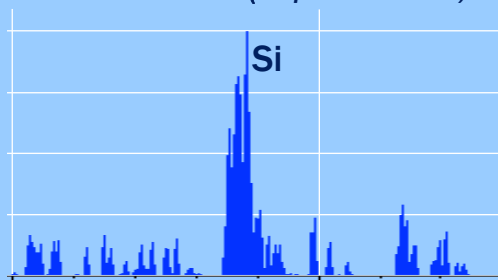


HAADF imaging of a two-dimensional SiO₂ glass.
 Huang et al., *Nano Letters* **12** (2012) 1081-1086

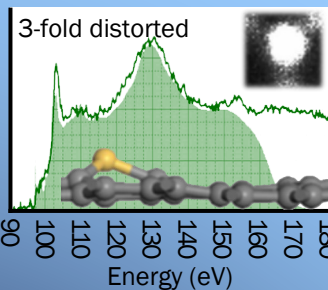
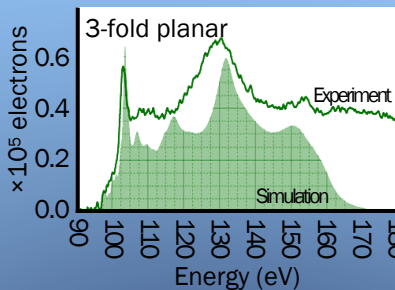
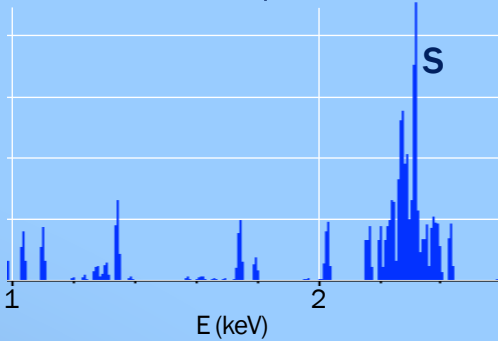


HAADF STEM image of single-atom impurities in meteorite nanodiamond.
 Stroud et al., *Appl. Phys. Lett.* **108** (2016) 163101

EDXS of atom 1 (acq. time = 9.4 s)

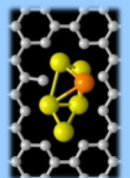
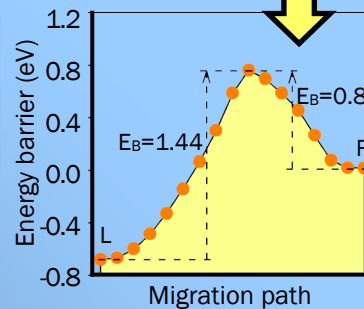
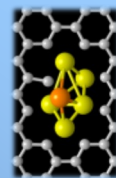


EDXS of atom 2 (acq. time = 8 s)



Analyzing the atomic environment of a single Si atom by EELS fine structure studies.

Ramasse et al., *Nano Letters* **13** (2013) 4989-4995



Exploring structural configurations for 6 Si atoms embedded in a 9-atom hole in graphene.
 Lee et al. *Nature Communications* **4** (2013) article 1650